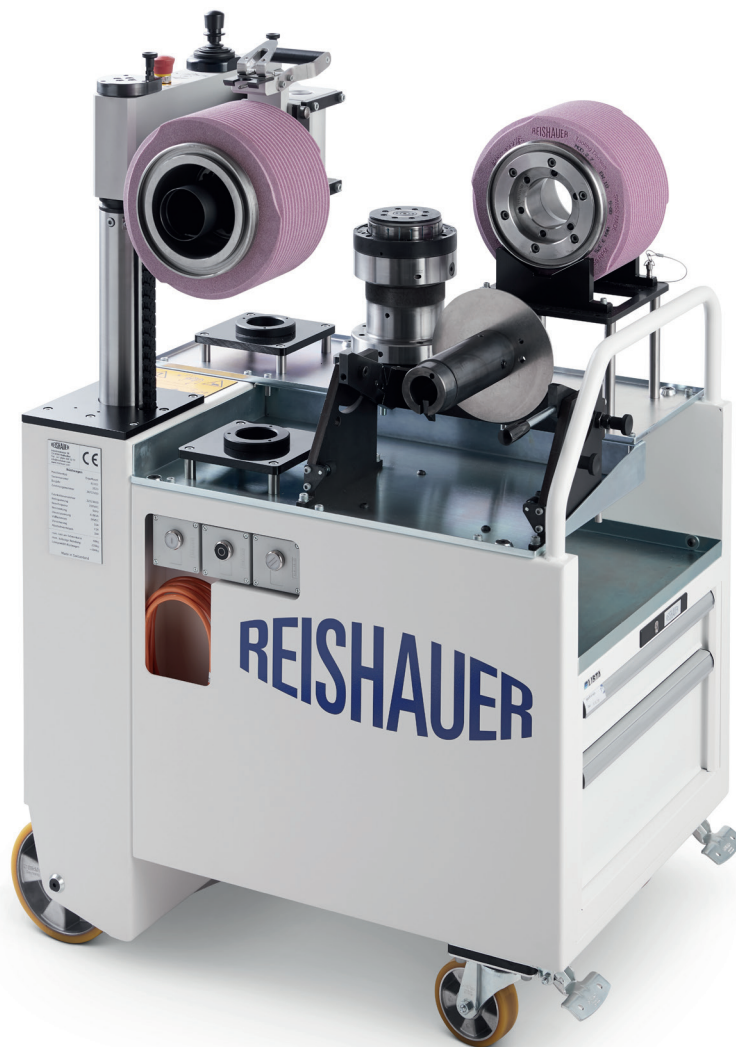


REISHAUER

Gear Grinding Technology

Wheel Mounting Cart ErgoMount



MACHINES

PERIPHERAL SYSTEMS

TOOLING

TECHNOLOGY

SERVICES

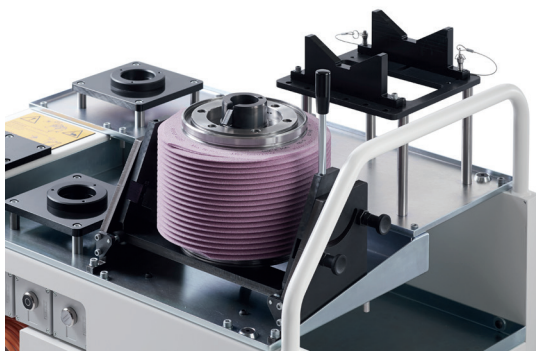
Wheel Mounting Cart ErgoMount

Wheel Mounting Cart ErgoMount

The Reishauer wheel mounting cart, ErgoMount, enables the machine operator to ergonomically and safely change grinding wheels and clamping tool arbours up to a weight of 40 kg. The unit has been designed for the RZx60 gear grinding machine series. It allows the direct mounting of a grinding wheel on the main spindle without any additional tools.

Thanks to the well-thought-out fast-changeover system and the relevant load-bearing elements, the changeover between the setups for grinding wheels and clamping arbours is done in next to no time.

The electrical lifting axis is controlled by a joystick and makes for comfortable operation. There are storage locations for two grinding wheels and up to three clamping arbours. Furthermore, a generously dimensioned tooling drawer and the integrated grinding wheel setup device turn the ErgoMount into a convenient helper in every production environment.



Highlights:

- Complies with all relevant machine and working guidelines
- Fast and safe changing of grinding wheels and workpiece clamping arbours
- Integrated grinding wheel setup device, pivotable by 90°
- Fast-changeover system with ball lock pin
- Clear layout of operating elements and readout instruments
- Storage positions for two grinding wheel and 3 clamping arbours
- Generously dimensioned and lockable tooling drawer
- Excellent manoeuvrability
- Compact design

Technical Data

The ErgoMount setup cart complies with the following guidelines and regulations:

- Machine guideline 2006/42/EG
- EN ISO 12100:2010, Safety of machinery - General principles for design - Risk assessment and risk reduction (ISO 12100:2010)
- EN 14238:2004+A1:2009, Cranes - Manually controlled load manipulating devices
- EN 13155:2003+A2:2009; Cranes - Safety - Non-fixed load lifting attachments

ErgoMount has been solely designed for industrial usage, and it is restricted to the lifting and moving of grinding tools and clamping tools for the setup of Reishauer gear grinding machines of the RZx60 (for other machine types, please contact Reishauer).

Dimensions	
Length	1010 mm
Width	675 mm
Height (swivel arm extended)	1530 mm
Height (swivel arm retracted)	1180 mm
Lifting range, max.	350 mm
Swivel radius, max.	1200 mm
Weights	
Unladen weight of cart	380 kg
Load, max.	220 kg
Load on swivel arm, max.	40 kg
Storage positions	
Grinding wheel flanges	2 off
Clamping tools arbours	3 off
Electrical Connections	
Connection voltage AC / frequency	230 V / 50 Hz or 115 V / 60 HZ
IP protection category (low voltage plug for Switzerland and EU area)	IP44
IP protection category (low voltage plug for China)	IP20
Acceptable voltage tolerance	+/- 10 %
Nominal power rating, max.	0.8 kVA
Control voltage	24 V
Fuse	10 A
IP protection category of unit	IP55
Colours	
RAL colour	RAL 9010

Reishauer reserves the right to make changes to the technical specifications.



Reishauer worldwide

SWITZERLAND

Reishauer AG
 Industriestrasse 36
 8304 Wallisellen
 Switzerland
 ☎ +41 44 832 22 11
 info@reishauer.com

GERMANY

Reishauer GmbH
 Humboldtstrasse 32
 70771 Leinfelden-Echterdingen
 Germany
 ☎ +49 711 947 56 0
 germany@reishauer.com

CHINA

Reishauer AG
 Beijing Representative Office
 Room 1708, SCITECH TOWER
 No.22 Jian Guo Men Wai Da Jie
 Beijing 100004
 China
 ☎ +86 10 651 571 75
 china@reishauer.com

USA

Reishauer Corp.
 1525 Holmes Road
 Elgin, IL 60123
 USA
 ☎ +1 847 888 38 28
 usa@reishauer.com

FRANCE

Reishauer AG
 21 rue de la Croix Blanche
 33000 Bordeaux
 France
 ☎ +33 6 0830 64 20
 france@reishauer.com

JAPAN

Reishauer KK
 Nisso Dai-17 Bldg. 3F
 2-14-30 Shinyokohama
 Kohoku-ku, Yokohama-shi
 222-0033 Kanagawa-ken
 Japan
 ☎ +81 45 476 58 33
 japan@reishauer.com

Find additional representatives at www.reishauer.com

Head Office:

Reishauer AG

Industriestrasse 36
 8304 Wallisellen
 Switzerland
 ☎ +41 44 832 22 11
 reishauer.com



REISHAUER

Gear Grinding Technology